

1

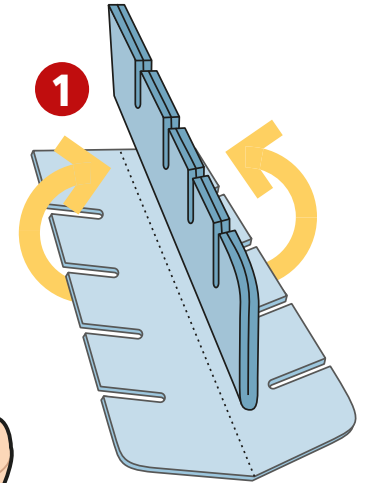
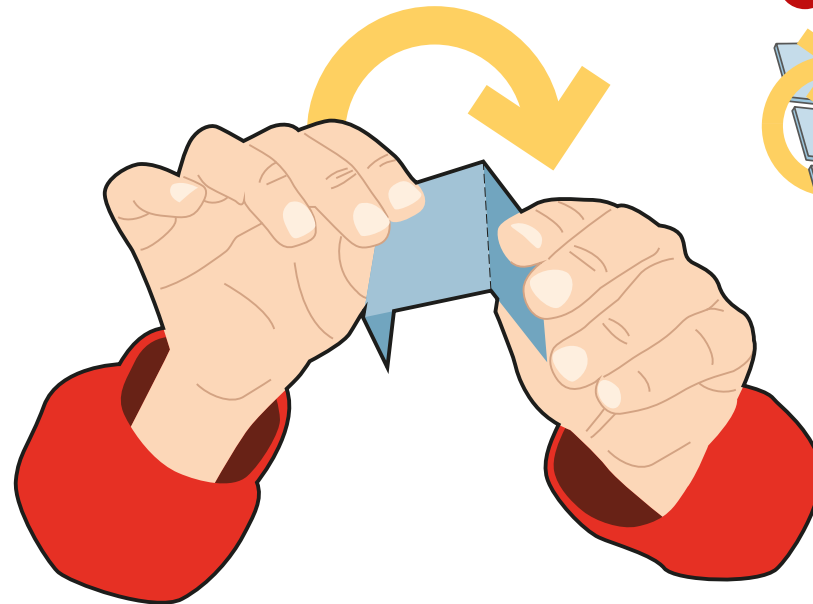
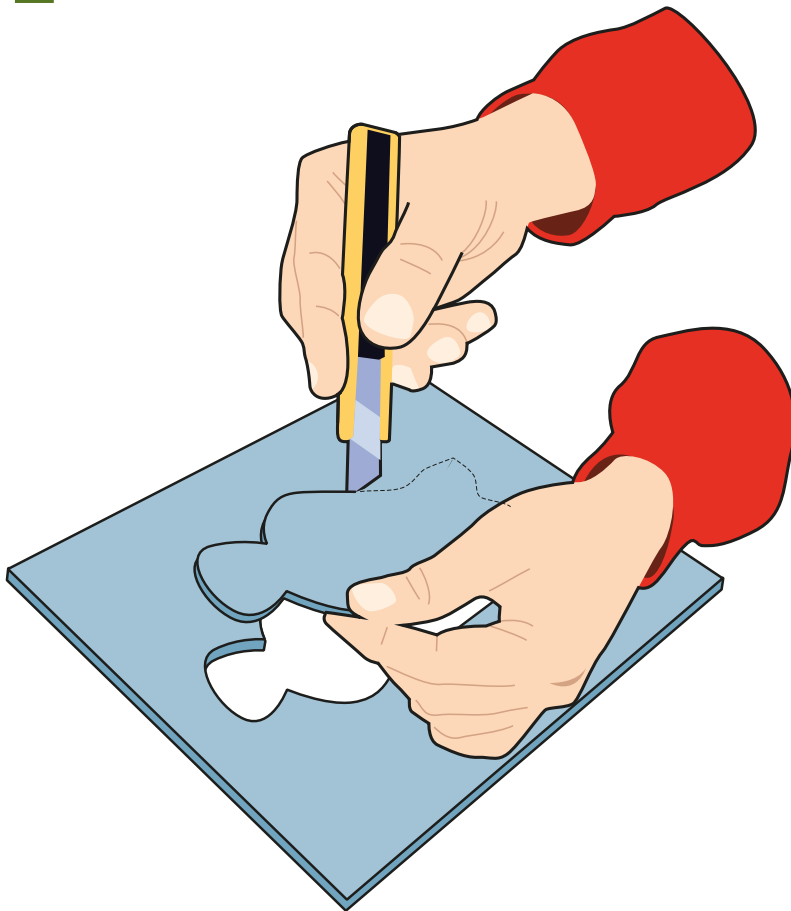
presempio

CARDBOARD FANCY NATIVITY SCENE



1

Separa le sagome esercitando pressione con le dita (se necessario, aiutati con un taglierino per rimuovere i residui).
Pop the silhouettes apart using your fingers (you may need a cutter to remove paper residues).



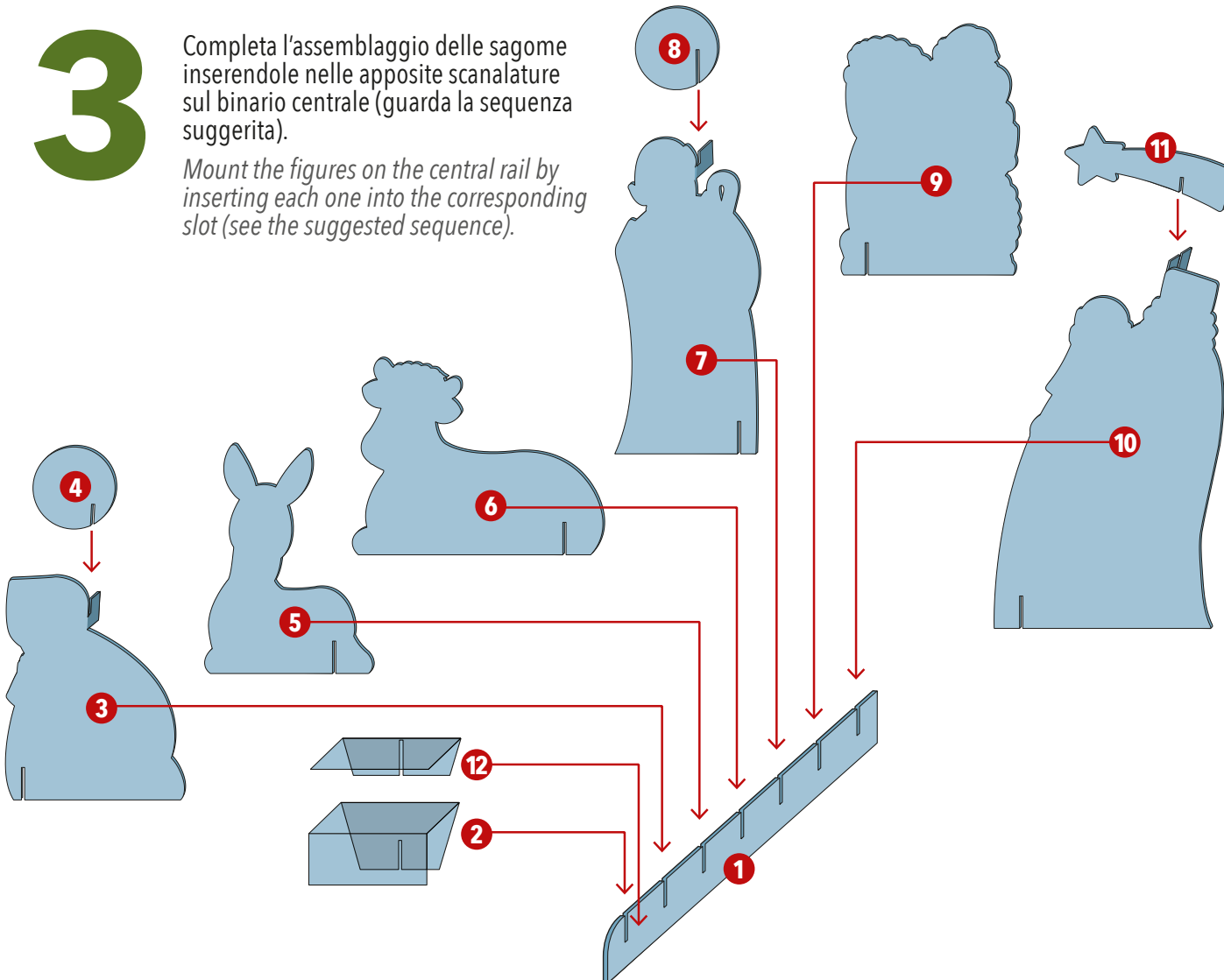
2

Dove necessario, piega le sagome seguendo le linee di cordonatura.
Wherever required, fold the shapes along the creases.

3

Completa l'assemblaggio delle sagome inserendole nelle apposite scanalature sul binario centrale (guarda la sequenza suggerita).

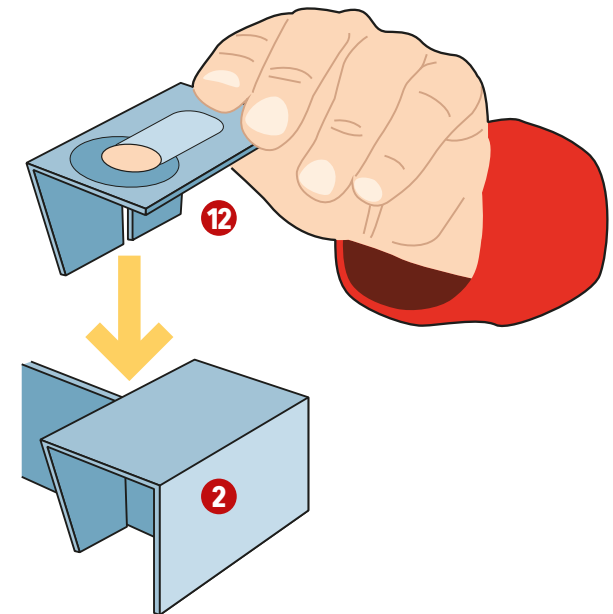
Mount the figures on the central rail by inserting each one into the corresponding slot (see the suggested sequence).



4

Puoi aggiungere subito la sagoma del Bambin Gesù oppure attendere la notte della Vigilia.

You can either add the Baby Jesus immediately or wait until Christmas Eve's night.



2

presempio

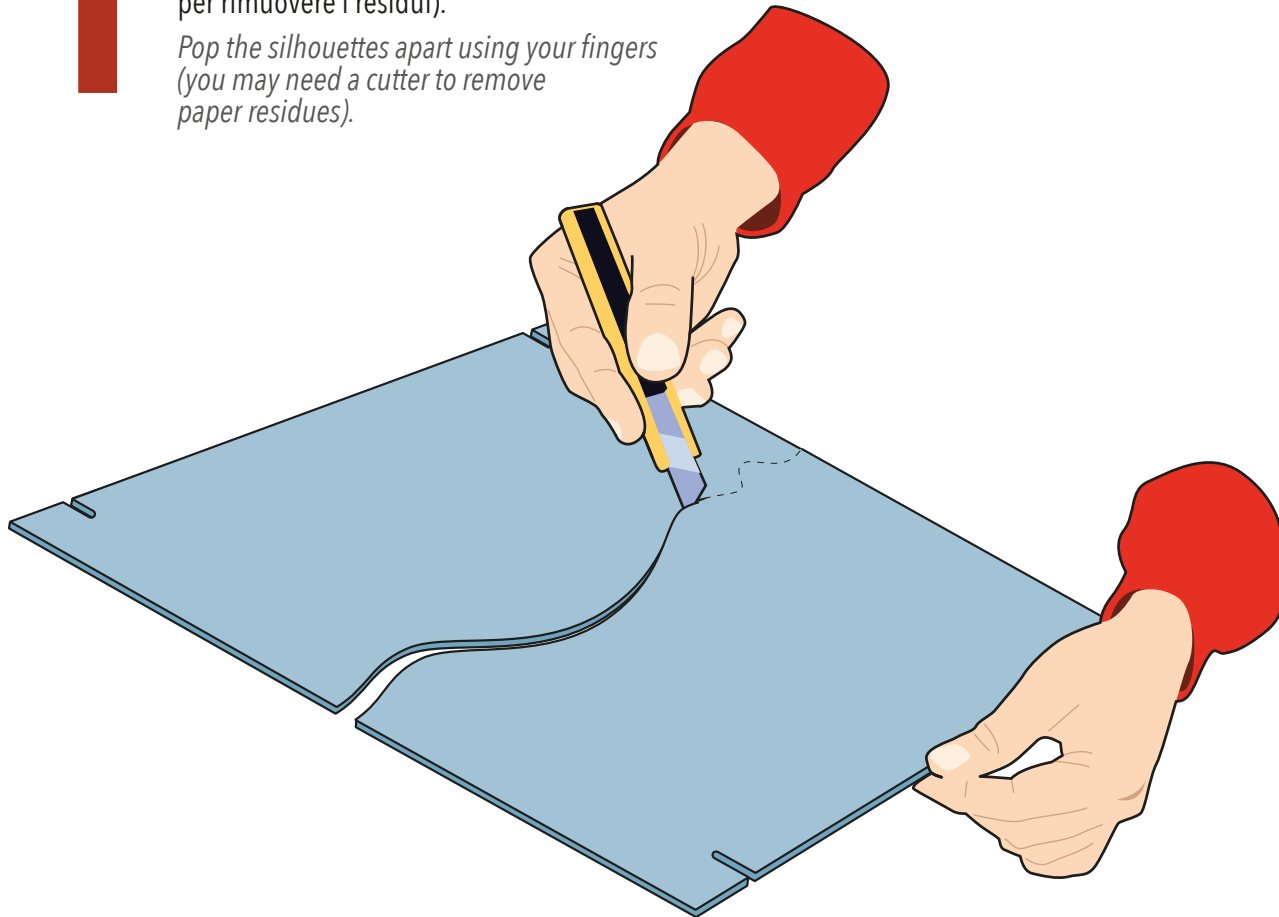
CARDBOARD FANCY NATIVITY SCENE



1

Separa le sagome esercitando pressione con le dita (se necessario, aiutati con un taglierino per rimuovere i residui).

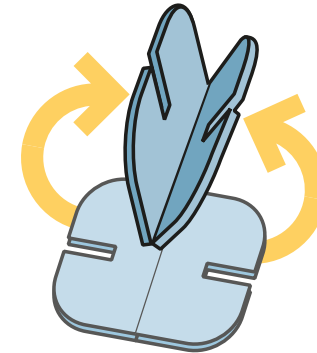
Pop the silhouettes apart using your fingers (you may need a cutter to remove paper residues).

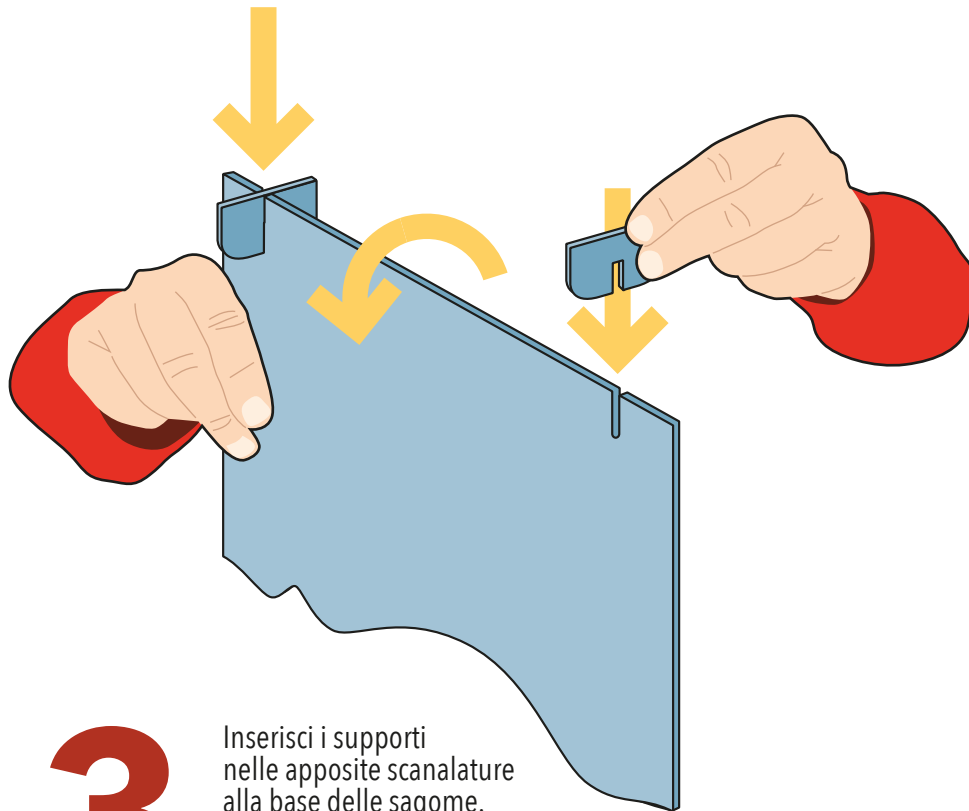


2

Piega i sostegni seguendo le linee di cordonatura.

Fold the stands along the creases.





3

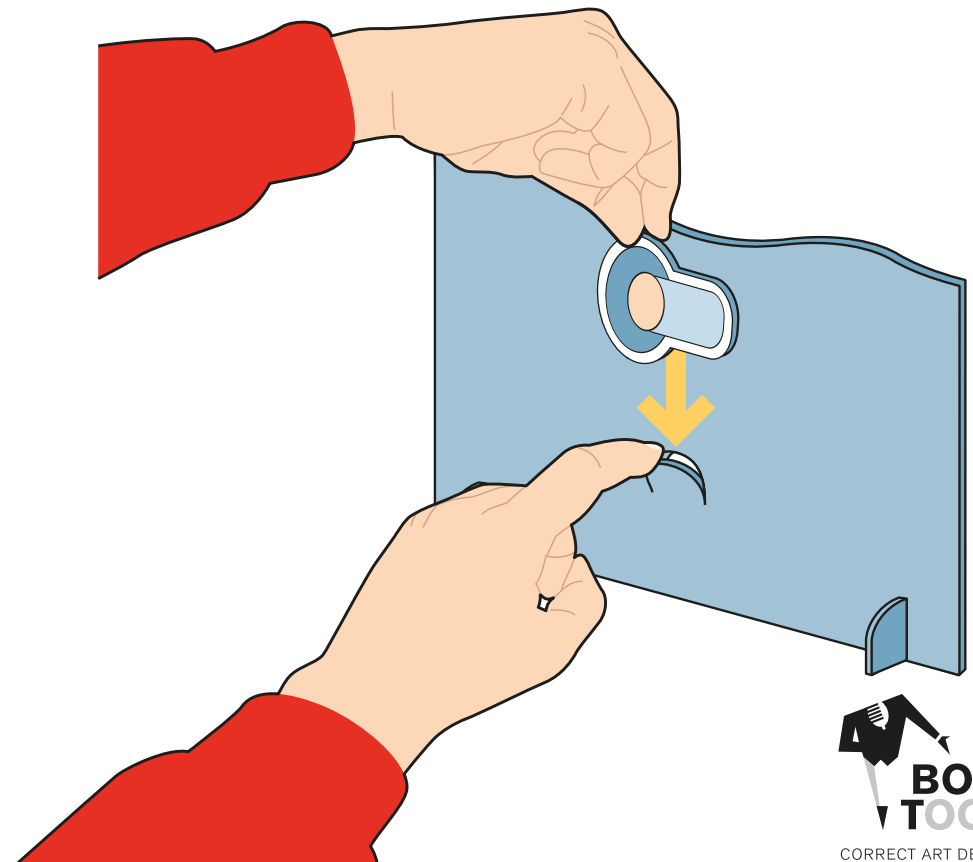
Inserisci i supporti
nelle apposite scanalature
alla base delle sagome.

*Insert each stand into the
corresponding slot at the
bottom of the silhouettes.*

4

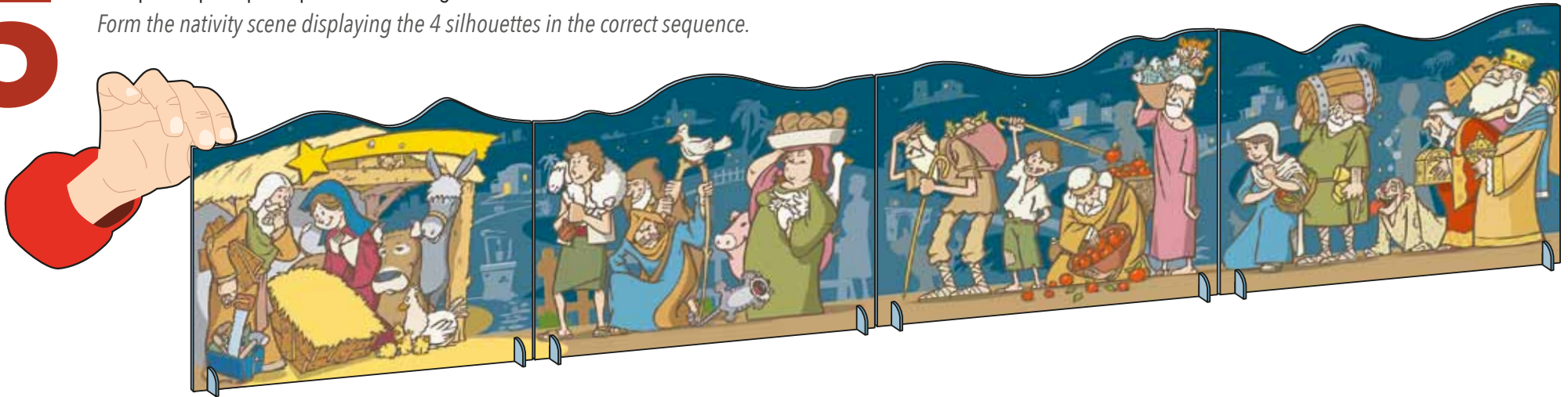
Puoi aggiungere subito la sagoma del Bambin Gesù
oppure attendere la notte della Vigilia.

*You can either add the Baby Jesus immediately
or wait until Christmas Eve's night.*



5

Componi il presepe disponendo le 4 sagome nell'ordine corretto.
Form the nativity scene displaying the 4 silhouettes in the correct sequence.



6

Disponi le sagome nel luogo che hai scelto. Ecco alcuni esempi di montaggio (in funzione dello spazio a disposizione).
Display the silhouettes in the chosen location. Here you are a few examples (depending on location's width).

